

Welcome to LUPA – helping the UTSA community get a closer look at our dynamic history and a hint of things to come.



## Longitudinal University Profile and Archive

University of Texas at San Antonio

UTSA

Office of Institutional Research

**LUPA** is UTSA's **L**ongitudinal **U**niversity **P**rofile and **A**rchive, brought to you by UTSA's Office of Institutional Research. The name LUPA (the Spanish word for magnifying glass) was chosen to help communicate the role of this university resource in helping us to more clearly see where we've been and where we're headed.

LUPA is a new resource. It's in its infancy, but already is providing new, more reliable views of UTSA's recent history. This presentation describes what LUPA is today, and our vision for what it will become in the near future.

To understand LUPA, you have to understand the role of the Office of Institutional Research.

The mission of the Office of Institutional Research (OIR) at the University of Texas at San Antonio is to advance UTSA's mission through the collection and reporting of institutional data, research and data analysis. In other words, our mission is to help administrators, faculty, staff, students, and other stakeholders see more clearly what is currently happening at the university and how that relates to what has happened in the past. To do this, OIR must evaluate literally millions of data elements describing the many activities of the university and summarize those data into easily digestible summaries. Then, we have to track those summaries across time to identify trends – so that we have a better idea of where we are headed. Finally, we have to continuously update the information to reflect changes each academic term.



# LUPA Objectives

- Efficiency
- Consistency
- Clarity
- Accessibility

**Efficiency** - Since our job is a big one, we must be as efficient as possible in the way we manage data and deliver reporting. Built on new hardware, software, and procedures, LUPA will allow us to automate more of the repetitive work of data management and provide the capacity for dealing with large datasets. Beyond the efficiency of standard processes, ad hoc queries for information in LUPA will run faster than with current OIR technologies.

**Consistency** - When data management processes are automated, the results are more consistent. The tools implemented with LUPA make it easier to build automated, scheduled processes, and the building of those processes requires us to think more systematically. Datasets in LUPA are designed for multiple academic terms, ensuring consistency in the treatment of the data across time.

**Clarity** - A summary from a single point in time rarely reveals information of significance. Generally, we need to know the trend. Further, the summary rarely answers the whole question. For greatest clarity, therefore, the data must be presented in time series with the opportunity for drill-down or recasting of the information to reveal other dimensions of the issue. LUPA provides us the tools to present data more dynamically, allowing greater clarity regarding what is really happening and why?

**Accessibility** - Finally, these historical data can only be of value if they are readily available to appropriate personnel. LUPA will combine several technologies to deliver secured information to appropriate users and provide those users with the means of dynamically controlling the content they wish to view.



## What is LUPA?

- Repository for official external reports and reporting datasets
  - THECB (Texas Higher Education Coordinating Board)
  - IPEDS (U.S. Department of Education)
  - CUPA (Faculty salary study)
  - AAUP (Faculty salary study)
  - US News (National rankings)
  - Common Data Set (Other surveys)

The primary purpose of LUPA is to serve as a repository of the official reports that represent the history of the university. These include many external reports and other key data captured each term.



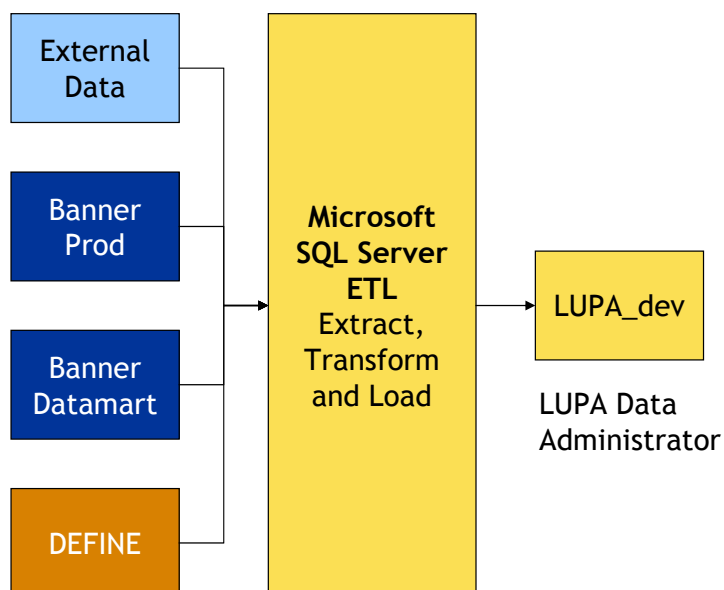
## What is LUPA?

- Record of published summaries
- View of summaries across time to establish trends
- Supporting detail for all summary reports
- Dynamic queries to drill-down into detail from summaries

LUPA then stores the record of how we've summarized our status in the past and presents the summaries across time to establish trends. But beyond these summaries, LUPA stores the supporting detail that allows us to re-examine what was behind or beneath that summary. Built on a relational database, LUPA allows us to dynamically query for the details that underlie summary statistics.

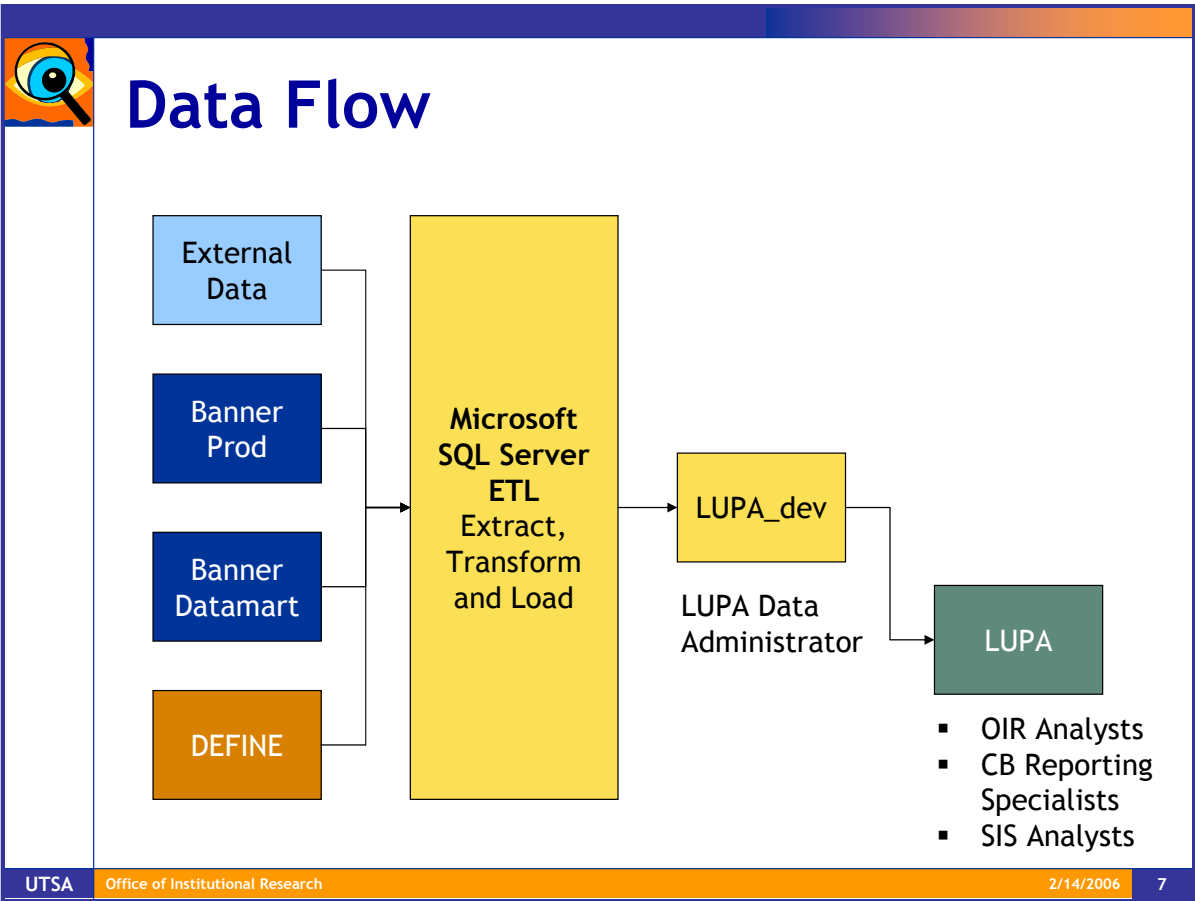


## Data Flow



LUPA consists of four primary data stores.

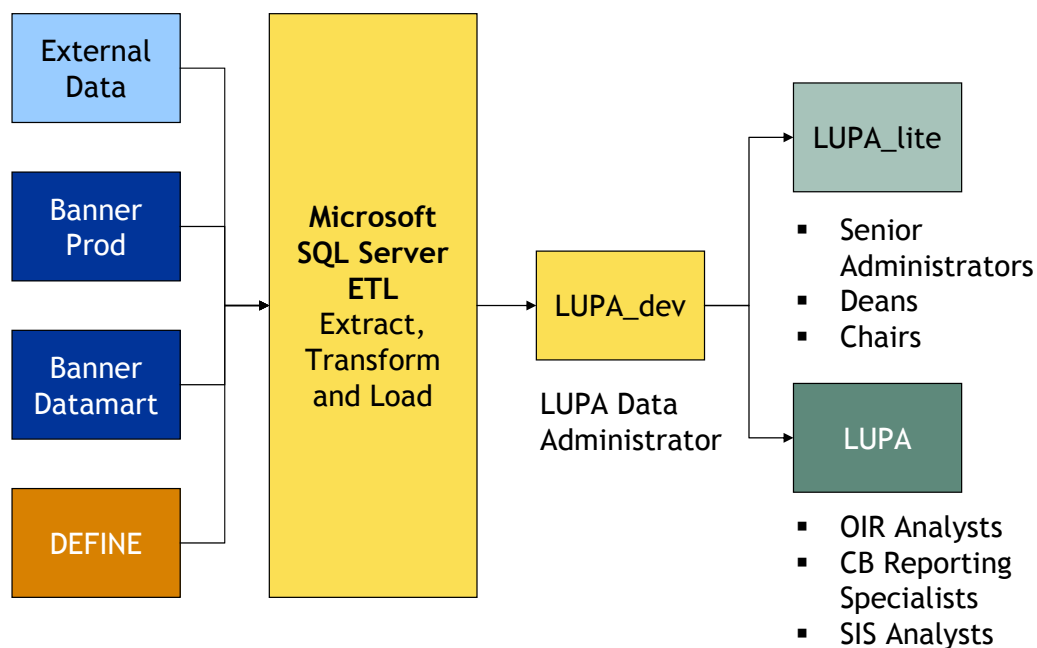
The first (**LUPA\_dev**) is the environment into which data is extracted, transformed, and prepared for loading to the reporting environments. SQL Server tools (known collectively as ETL for extract, transform, and load) can be scheduled to run automatically to perform repetitive tasks outside of normal business hours. The LUPA Data Administrator is the person with rights to this environment.



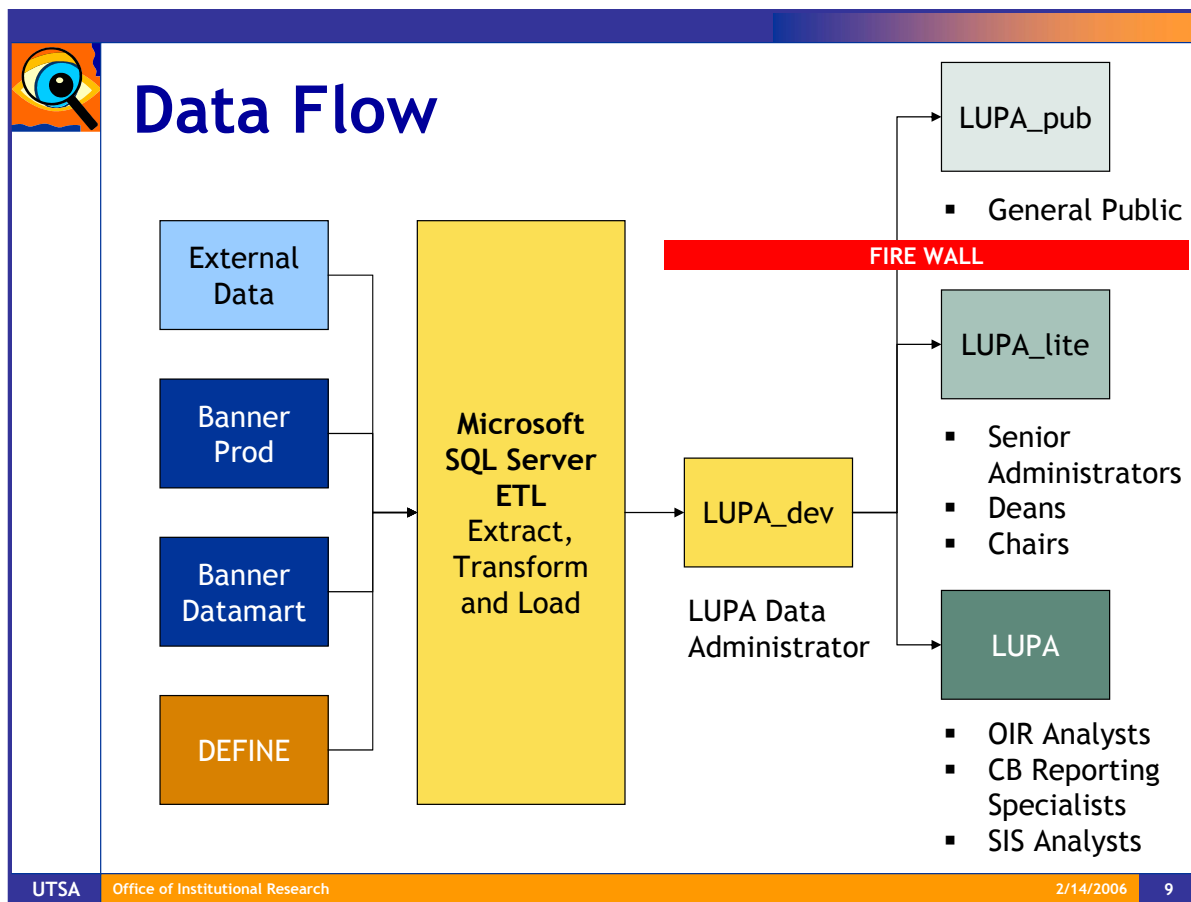
The primary reporting environment is called **LUPA**. Authorized analysts across campus will be granted rights to view and query data in this environment.



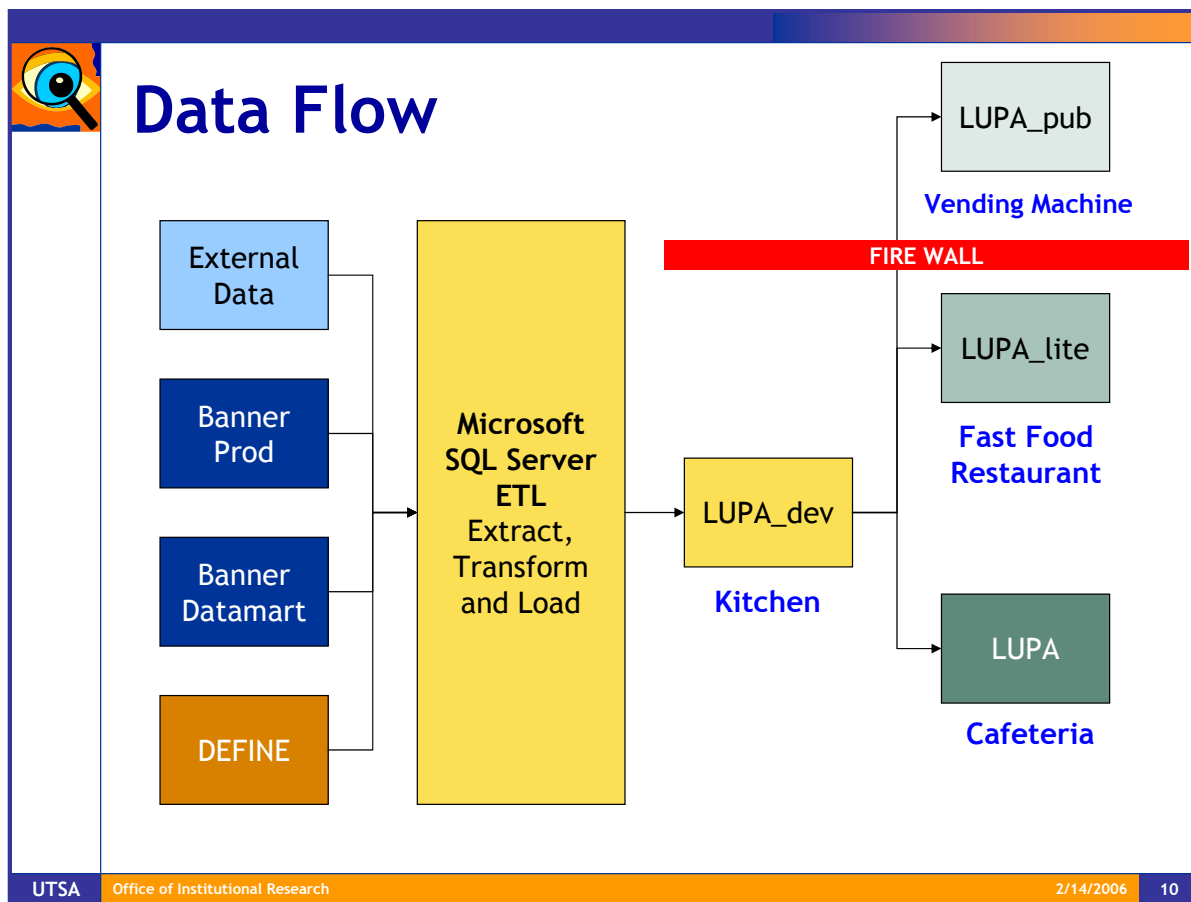
## Data Flow



A third environment (**LUPA\_lite**) will be created to expose role-specific data and summaries to administrators.

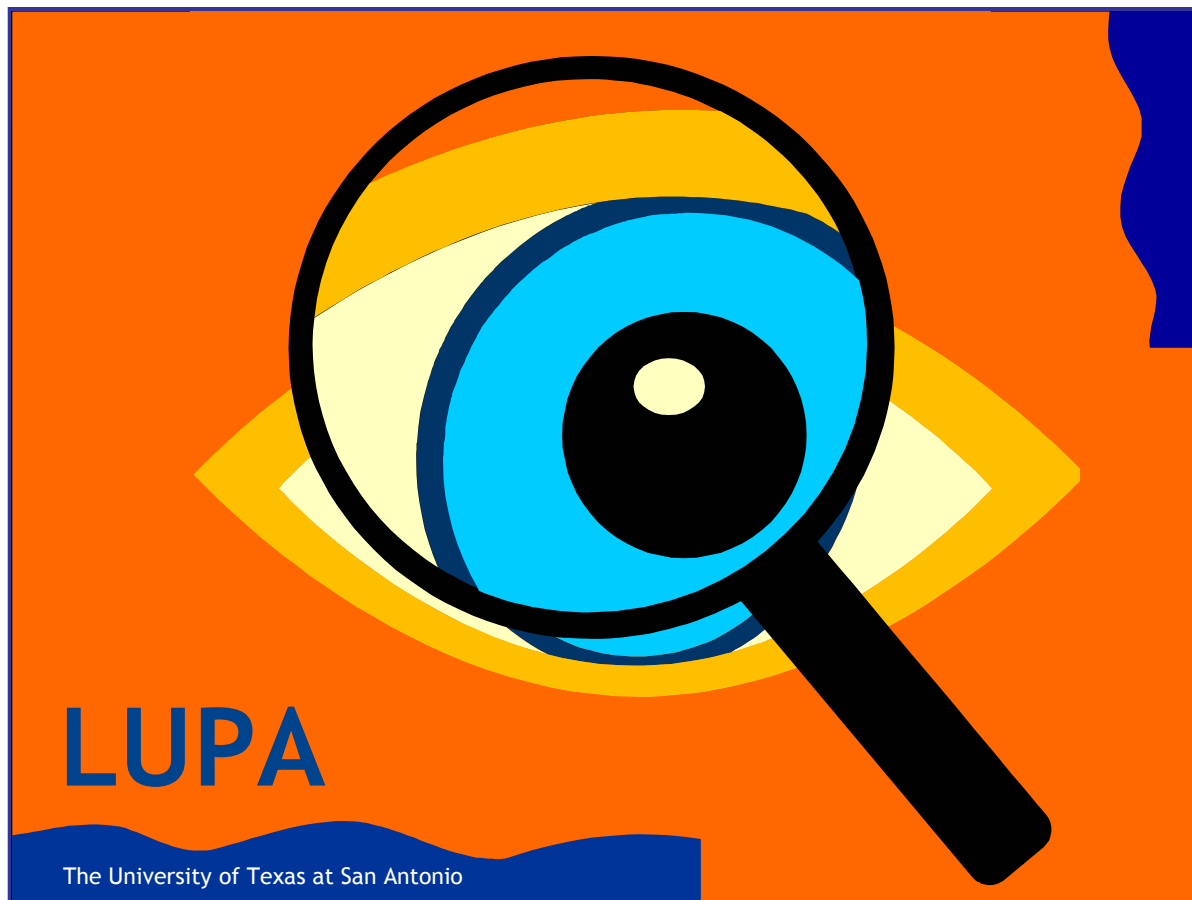


And a fourth environment (**LUPA\_pub**) will be used to delivery summary data to the general public. LUPA\_pub will be internet accessible outside the university network and will contain only summaries – no personally identifying information will be housed in this public dataset.



These four LUPA environments can be thought of as:

- the **Kitchen** (LUPA\_dev) where the raw data ingredients are processed into servable portions
- the **Cafeteria** (LUPA) where all the servable data products are available to choose from to meet a wide variety of needs
- the **Fast Food Restaurant** (LUPA\_lite) where bite-size data servings are ready for consumption – but where you can still “have it your way”
- the **Vending Machine** (LUPA\_pub) where only packaged data products are available



That's our vision for LUPA – helping the UTSA community get a closer look at our dynamic history and a hint of things to come.

Please stay tuned for more exciting developments.