

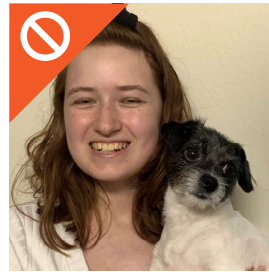
Unacceptable UTSA Card Photo Examples



No Photo Filters



No Hats



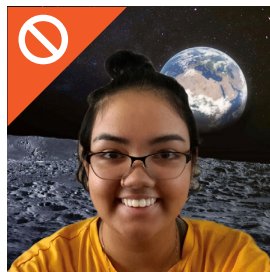
No Pets



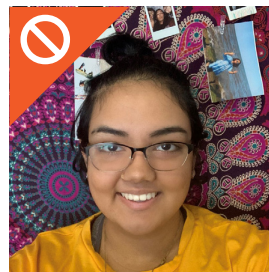
No Sunglasses



No Off-Center Photos



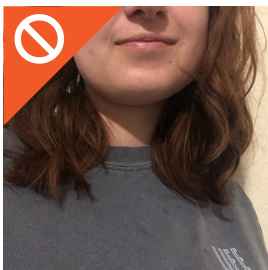
No Digital Backgrounds



No Busy Backgrounds



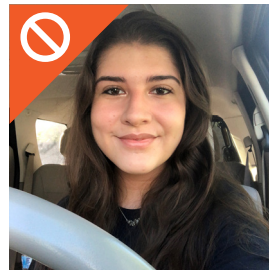
No Busy Backgrounds



No Cropped Images,
No Off-Center Photos



No Hats, No Masks,
No Hand Gestures,
No Off-Center Photos



No Photos Inside
Vehicle

Acceptable Photo



Photo Requirements

- ✓ Photo must be in color, recent (no older than six months), and show your head and shoulders.
- ✓ Photo must be square, no more than 20MB, and saved as a .jpg file.
- ✓ You must be facing forward. No side shots or profiles.
- ✓ You must be in front of a plain white background. Borders, filters, or busy backgrounds are not accepted.
- ✓ Sunglasses, hats, props, funny faces, etc. are not accepted. Head-pieces are acceptable only if worn for religious purposes.
- ✓ You must be alone in the photo. You may not include friends, family, pets or others.