

### LETTER FROM THE PRESIDENT

The University of Texas at San Antonio has come a long way in its nearly 40 years of existence. The original campus, consisting of five major buildings, was constructed based on a beautifully conceived plan by Ford, Powell & Carson Architects. The core values of that plan, reflected in the Sombrilla Plaza and deep loggias, continue to be the heart of the built environment of the UTSA Main Campus.

Much has changed. The campus was initially constructed on a large piece of property distant from the urban core. Today, the Downtown Campus provides UTSA a downtown presence, and the Main Campus is in the midst of the fastest growing suburban area in the City of San Antonio, the seventh largest city in the nation.

Over the last decade, UTSA has experienced unprecedented enrollment growth, growth in the number of degree programs, and increases in research expenditures. The number of students living on campus has doubled and the student population has increased to more than 28,000 students, making it the second largest university in The University of Texas System. UTSA has emerged as a university of first choice for many students.

The Plan provides a foundation for the “right-sizing” of the UTSA campuses and promoting an enriched physical environment supporting excellence and academic success. It accommodates the needs of students, the academy, and researchers, as the number of degree programs and research expenditures continue to increase.

The Plan also provides a vision for future development of athletics facilities at this unique time for the athletics department at UTSA. The Plan provides for the expansion of UTSA athletics, including the additional of a Division I football team, and facilitates community engagement in athletic activities.

The extraordinary enrollment growth, the evolving academic and research environment, the development of resident student housing and related student life programs, the growth of UTSA athletics programs, the addition of 125 acres at UTSA Park West, and the dramatic changes in the surrounding community, inspired us to pursue a “refreshed” Campus Master Plan for UTSA. This plan invites us to return to the beauty and tranquility of a Main Campus that provides for preservation of open space and a system of buildings and civic spaces connected by a logical system of pathways and roadways. It also expands that vision to the Downtown and HemisFair Park campuses.

The Campus Master Plan is based on a set of principles that support the goals of UTSA Vision 2016, UTSA's recently developed strategic plan. Like Vision 2016, the Campus Master Plan is a common vision for the University developed through a highly participatory process. The Campus Master Plan and the strategic plan will guide UTSA's development as a premier university generating world-class research, providing access to educational excellence and preparing leaders for the global environment to enhance our economy and promote quality of life.

We will strive to develop a common identity among the three UTSA campuses, each with a unique “sense of place”, as we undertake projects that contribute to the Plan. With this Plan, I am confident that we can and will develop a more open and inviting built environment that will take UTSA's teaching, research and service mission into the future. Implementation of the Plan will play a vital part in UTSA's emergence as the Next Great Texas University.

Ricardo Romo

**FIGURE 1**  
*View of UTSA Downtown Campus*

**FIGURE 2**  
*Dr. Ricardo Romo, President*







# OVERVIEW

*In 2007, The University of Texas at San Antonio began a major campus planning initiative. This exercise began at a crucial moment in the University's history. The resulting Campus Master Plan responds to the unprecedented enrollment growth of the past decade, the acquisition of new property, and a desire to enhance the campus's physical environment. It is the result of a highly participatory process involving representatives from all facets of the University. The Campus Master Plan is intended to help the University achieve its current strategic goals regarding growth as well as to set a pattern for the University's long-term development.*



OVERVIEW

**FIGURE 1**  
*Plan of the existing Central Main Campus*

**FIGURE 2**  
*Plan of the future Central Main Campus*

**FIGURE 3**  
*Aerial View of the future Central Main Campus*

- Existing UTSA Buildings
- Future UTSA Buildings

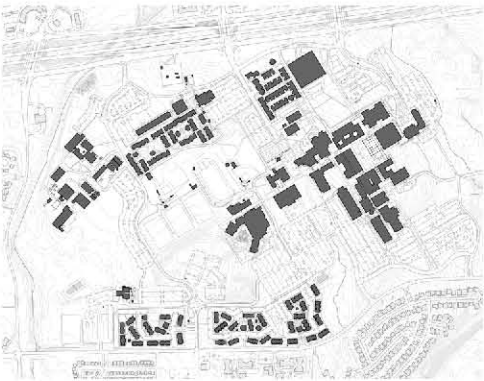
This Campus Master plan directly supports the objectives laid out in the University's strategic plan *A Shared Vision UTSA 2016* by returning to the principles that guided the design of the UTSA Main Campus's historic core.

The Master Plan reestablishes the campus's urban character and its connection to the surrounding landscape. It extends these concepts to the UTSA Downtown Campus and to the recently acquired UTSA Park West area of the Main Campus. The Master Plan delineates the civic structure of the UTSA campuses—the interconnected streets, walks, quadrangles, courtyards, and playfields that give form to the public realm. It is a flexible document that will allow UTSA's campuses to grow and change over time. It incorporates guidelines for architectural and landscape design, wayfinding, and sustainability, and makes recommendations for the process of initiating, designing, and administering campus projects.

THE UTSA MAIN CAMPUS

The Campus Plan for the UTSA Main Campus accommodates the considerable increase in building area necessary for the University to serve its academic and research missions. The plan accommodates an expanded academic core as well as the additional housing, recreational sports, student life facilities, and other amenities needed to complete the transformation of the campus from that of a primarily commuter institution to that of a major residential academic and research university.

The plan creates a framework of primary and secondary quadrangles, courtyards, and other open spaces interconnected by a network of tree-lined pedestrian and vehicular streets. The plan embraces the civic principles underlying the original campus core, embodied in the central Sombrilla Plaza and the radiating Paseos, and extends them outward to organize the site.











ONGIK LEE / 1090225 W6



**UTSA Park West**

The plan proposes that a new Athletics Complex be constructed on the southern portion of UTSA Park West—the University's recently acquired land west of the original campus. This will be the home of the university's expanding athletic program, including its new football program. The northern portion of UTSA Park West will be developed as a mixed-use neighborhood with parking garages. Both the athletics and mixed-use areas will be pedestrian-friendly neighborhoods with low-speed, tree-lined vehicular streets.

**East Campus**

The mostly undeveloped eastern portion of the Main Campus is habitat for endangered species and part of the Edwards Aquifer Recharge Zone. Because the Central Main Campus and UTSA Park West have sufficient capacity to accommodate all anticipated growth, the East Campus will be preserved in a natural state, and will serve the University as a recreational and environmental amenity.





3

THE UTSA DOWNTOWN CAMPUS

The construction of the UTSA Downtown Campus began in 1995. It currently serves about 6,000 students and has expanded from its original Central Academic Block to include an additional building across the street to the west.

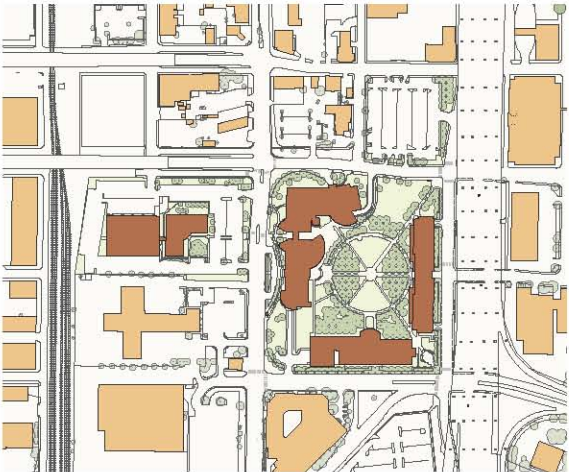
The Campus Master Plan proposes that as the Downtown Campus grows, it incorporate the entire block to the west of the Central Academic Block, that the

recently acquired block north of the Central Academic block also be developed, and that the architectural and landscape design of the entire campus be developed to create a coherent ensemble.

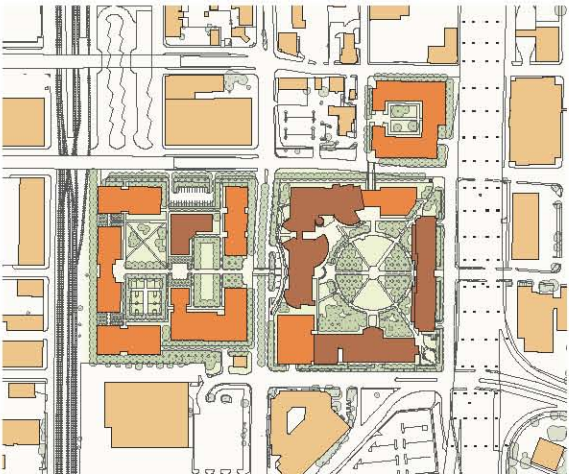
A series of public spaces, organized along an east-west central axis, will link the new western block of the Downtown Campus to the Central Academic Block. The intervening public street will be developed as a tree-lined boulevard to strengthen the continuity of the campus environment.

THE UTSA HEMISFAIR PARK CAMPUS

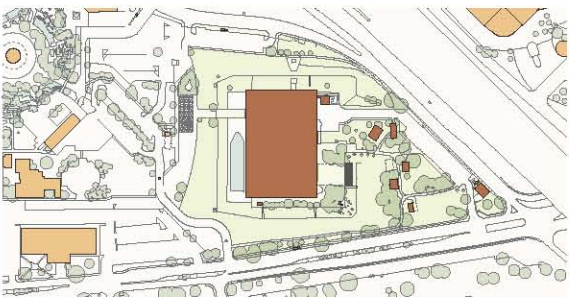
The UTSA HemisFair Park Campus is the home of the Institute of Texan Cultures, a museum and research institute dedicated to the preservation and study of Texan history and operating under the aegis of UTSA. It is close to the Riverwalk and adjoins San Antonio's convention center and HemisFair Park. The City of San Antonio is currently conducting a separate master plan for the entire HemisFair area. UTSA will conduct an additional master plan for the HemisFair Park Campus after the City's plan is complete. The scope of this Campus Master Plan is limited to a review of the Campus's wayfinding systems and recommendations for their improvement.



4



5



6

**FIGURE 1**  
*Aerial View of the future UTSA Park West*


**FIGURE 2**  
*Plan of the future Main Campus*

**FIGURE 3**  
*Aerial View of the future Downtown Campus*

**FIGURE 4**  
*Existing Plan of the Downtown Campus*

**FIGURE 5**  
*Plan of the future Downtown Campus*

**FIGURE 6**  
*Existing Plan of the HemisFair Park Campus*

 Existing UTSA Buildings

 Future UTSA Buildings